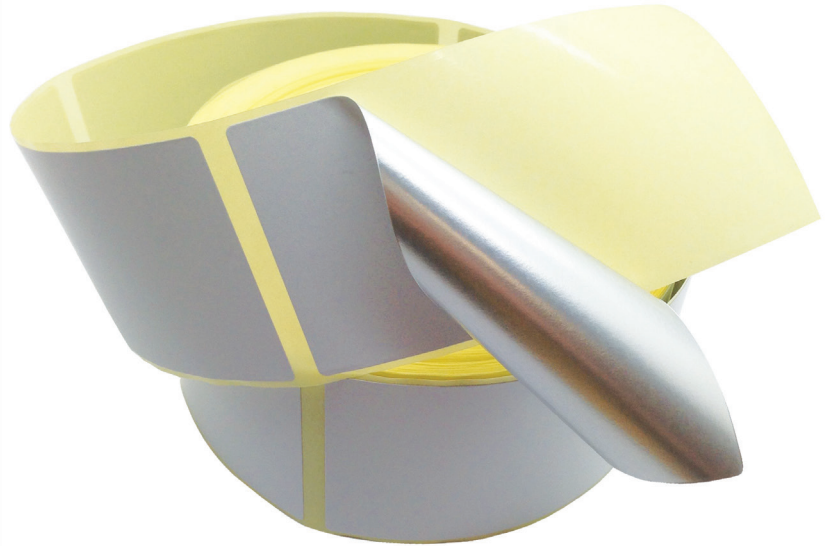




## BST Detectable Labels | LABELMD

---



### The BST Detectable Labels

---

BST metal detectable plain white uncoated labels are ideal for basic labelling applications in hygiene critical environments. The reverse side of the label is a 7 $\mu$  aluminium foil, which is highly detectable by most food industry metal detectors in environments where

aluminium packaging is not used for the food product. Our standard sized plain white labels are kept in stock at BST, along with our detectable self-adhesive tapes and detectable loop tags. For bespoke detectable labels, please contact our sales team.

### BST Label Advantages

---

- ✓ Detectable by in-line metal detection systems
- ✓ Compliant with ISEG, FDA and BgVV XIV
- ✓ Bespoke printing service available
- ✓ Can be used as part of HACCP and BRC procedures
- ✓ Displays due diligence in the prevention of foreign body contamination

## Product and Packaging Information

<b>Product Code</b>	LABELMD	<b>Dimensions</b>	60mm x 121mm
<b>Pack Size</b>	500 Labels Per Roll	<b>Material</b>	59gsm Uncoated Paper
<b>Pack Weight</b>	0.45kg	<b>Thickness</b>	60µm
<b>Colours</b>	White	<b>Outdoor Use</b>	Not Recommended
<b>Print Options</b>	Printing Service Available	<b>Detectability</b>	Metal Detectable
<b>Temperature Range</b>	-40°C to +120°C	<b>Country Of Origin</b>	Britain
<b>UV Resistance</b>	Good (Not direct sunlight)	<b>Commodity Code</b>	48114190

## Safety Certificates / Approvals

FDA Approved      BRCGS Compliant      Made In Britain      ISO 9001:2015



## Product Materials

60 micron gloss white Polyethylene with silver metalised back, a clear permanent acrylic based adhesive with good adhesion to apolar substrates such as PP/PE.

## Typical Applications

Ideally suited to light industrial and food tagging applications where metal detection is required. Suitable for printing by all conventional methods.

## Compliances

ISEGA, FDA 175.105, and with BgVV XIV recommendations for direct contact with dry non-fatty foods.

## Metal Detectability

---

BST metal detectable labels contain a 7 $\mu$  aluminium layer to provide metal detectability. As such, your inspection systems should be capable of detecting aluminium contaminants. These labels are not considered to be compatible when used in conjunction with aluminium trays / other aluminium food packaging. Metal detectability performance will vary based on, but not limited to the following factors:

- Calibration Levels
- Product Type (E.g. Wet, Dry, Frozen, Liquid)
- Aperture Dimensions
- Orientation

Orientation is a highly influential factor for the metal detectability of a contaminant that is non spherical, i.e. it will be easier to detect the contaminant when passing in one orientation compared to another - this is known as the orientation effect.

For this reason BST recommend that all our products be thoroughly tested on your metal detection systems by a trained and certified professional. It may be the case that your equipment needs to be re-calibrated in order to reliably detect this product. Such a professional should be available by contacting the manufacturer of your metal detection system.

The information provided in this product specification sheet is based on our experience and knowledge to date and we believe it to be true and reliable. This information is intended as a guide for your use of our products, the use of which is entirely at your own discretion and risk. We, BS Teasdale & Son Ltd, cannot guarantee favourable results and assume no liability in connection with the use of our products. © 2023 BS Teasdale & Son Ltd. All Content, Data & Images are owned by BS Teasdale & Son Ltd and are protected by international copyright law.